

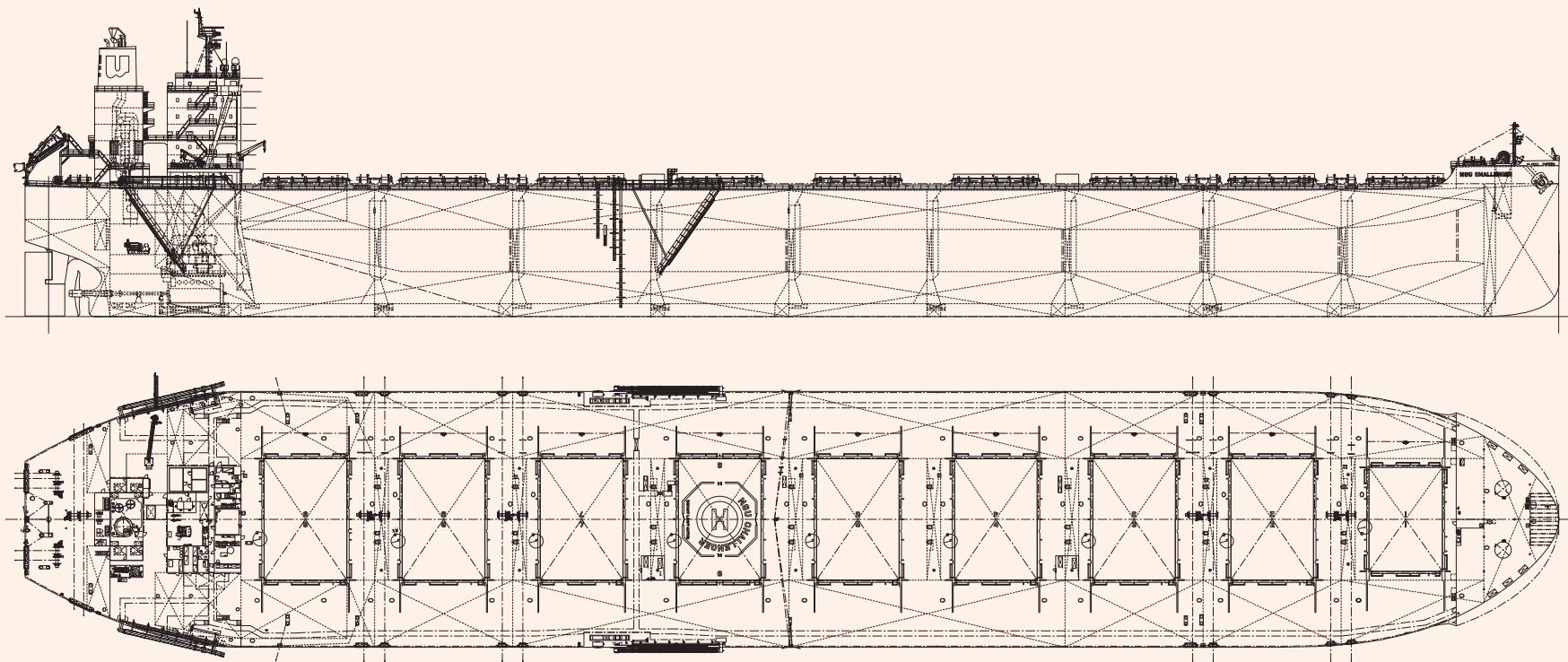
NSU CHALLENGER 208,359 DWT Bulk Carrier

36

☐ Contents ☐ By Builder ☒ By Ship Type



NSU CHALLENGER 208,359 DWT Bulk Carrier 36



PRINCIPAL PARTICULARS

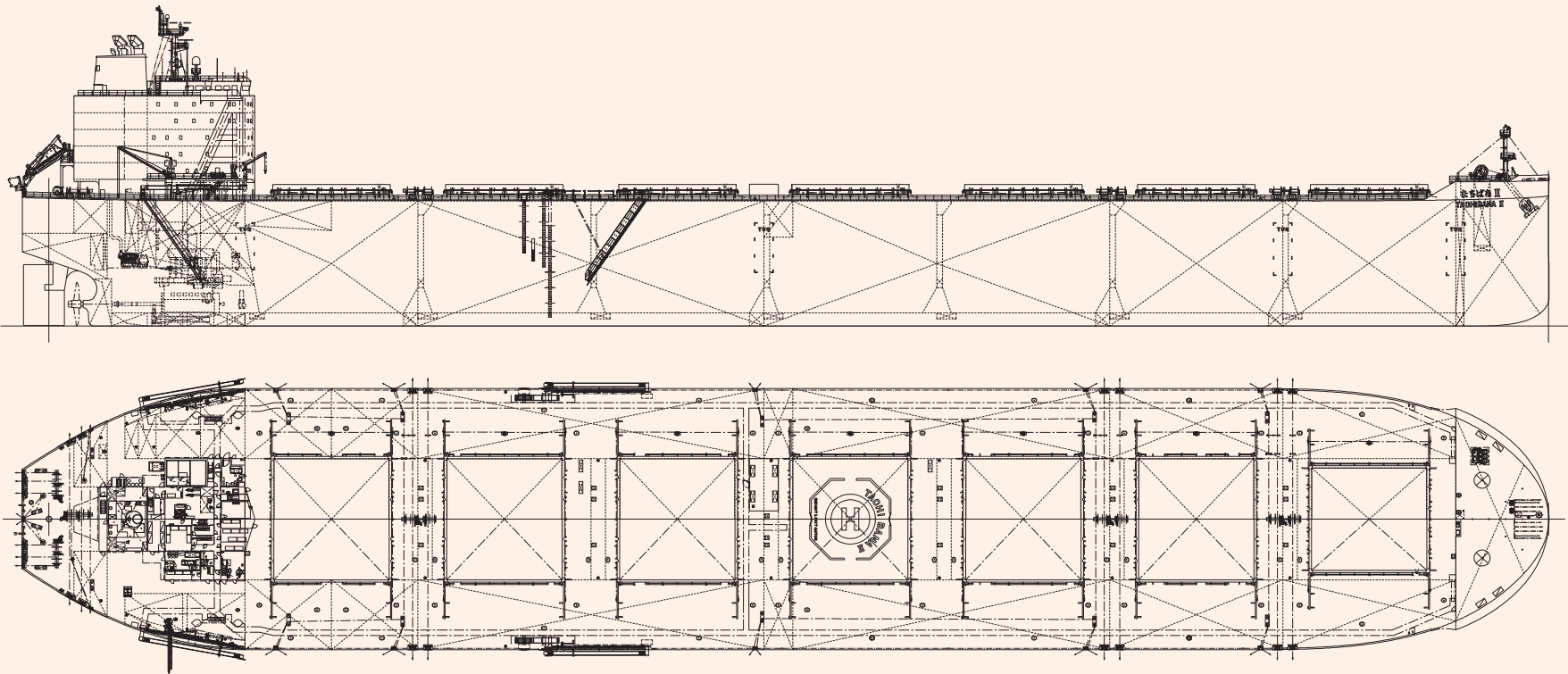
Length (o.a.)	299.95 m	Main engine	MITSUI-MAN B&W 6G70ME-C9.5
Breadth (mld.)	50.00 m	MCR (kwxmin ⁻¹)	15,280 kW × 73.9 min ⁻¹
Depth (mld.)	24.70 m	Speed (service)	abt. 14.6 knots
Draft (ext.)	18.320 m (Summer draft)	Complement	28 Persons
Gross tonnage	108,100	Classification	NIPPON KAIJI KYOKAI (NK)
Deadweight	208,359 MT	Builder	Imabari Shipbuilding Co., Ltd. / Saijo Shipyard

TACHIBANA II 142,883 DWT Bulk Carrier 37

☐ Contents ☐ By Builder ☒ By Ship Type



TACHIBANA II 142,883 DWT Bulk Carrier 37



PRINCIPAL PARTICULARS

Length (o.a.)	274.95 m	Main engine	MITSUI-MAN B&W 7G60ME-C9.5-EGRBP
Breadth (mld.)	47.00 m	MCR (kwxmin ⁻¹)	14,220 kW × 84.0 min ⁻¹
Depth (mld.)	22.50 m	Speed (service)	abt. 14.0 knots
Draft (ext.)	15.123 m (Summer draft)	Complement	30 Persons
Gross tonnage	84,022	Classification	NIPPON KAIJI KYOKAI (NK)
Deadweight	142,883 MT	Builder	Imabari Shipbuilding Co., Ltd. / Marugame HQ

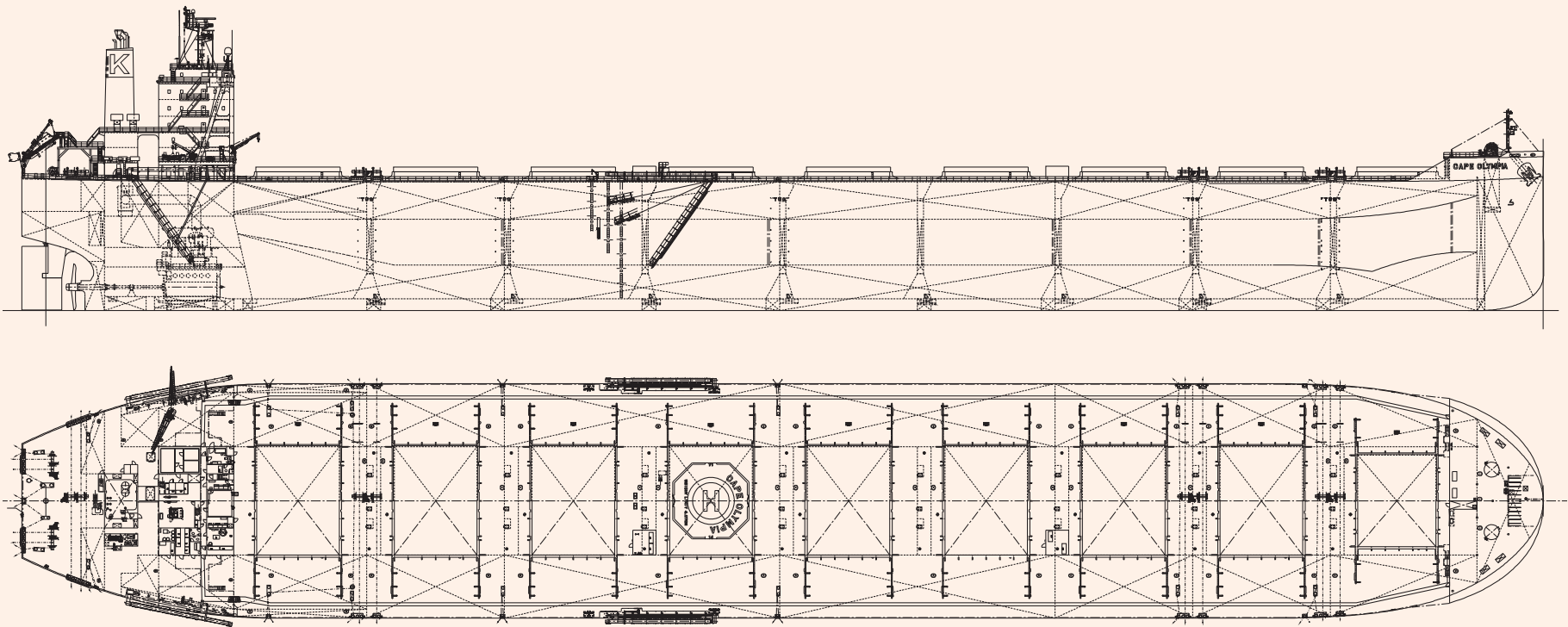
CAPE OLYMPIA 183,057 DWT Bulk Carrier

38

☐ Contents ☐ By Builder ☒ By Ship Type



CAPE OLYMPIA 183,057 DWT Bulk Carrier 38



PRINCIPAL PARTICULARS

Length (o.a.)	291.95 m	Main engine	MITSUI-MAN B&W 6G70ME-C9.5
Breadth (mld.)	45.00 m	MCR (kwxmin ⁻¹)	14,880 kW × 73.5 min ⁻¹
Depth (mld.)	24.70 m	Speed (service)	abt. 14.8 knots
Draft (ext.)	18.246 m (Summer draft)	Complement	25 Persons
Gross tonnage	93,702	Classification	NIPPON KAIJI KYOKAI (NK)
Deadweight	183,057 MT	Builder	Imabari Shipbuilding Co., Ltd. / Hirishima Shipyard

DREAM CLOVER 211,000 DWT Bulk Carrier

39

☐ Contents ☐ By Builder ☒ By Ship Type



DREAM CLOVER 211,000 DWT Bulk Carrier 39

Japan Marine United Corporation (JMU) delivered “DREAM CLOVER”, the first J-Series 211,000 DWT Bulk Carrier at the Tsu Shipyard on July 28, 2021.

Features

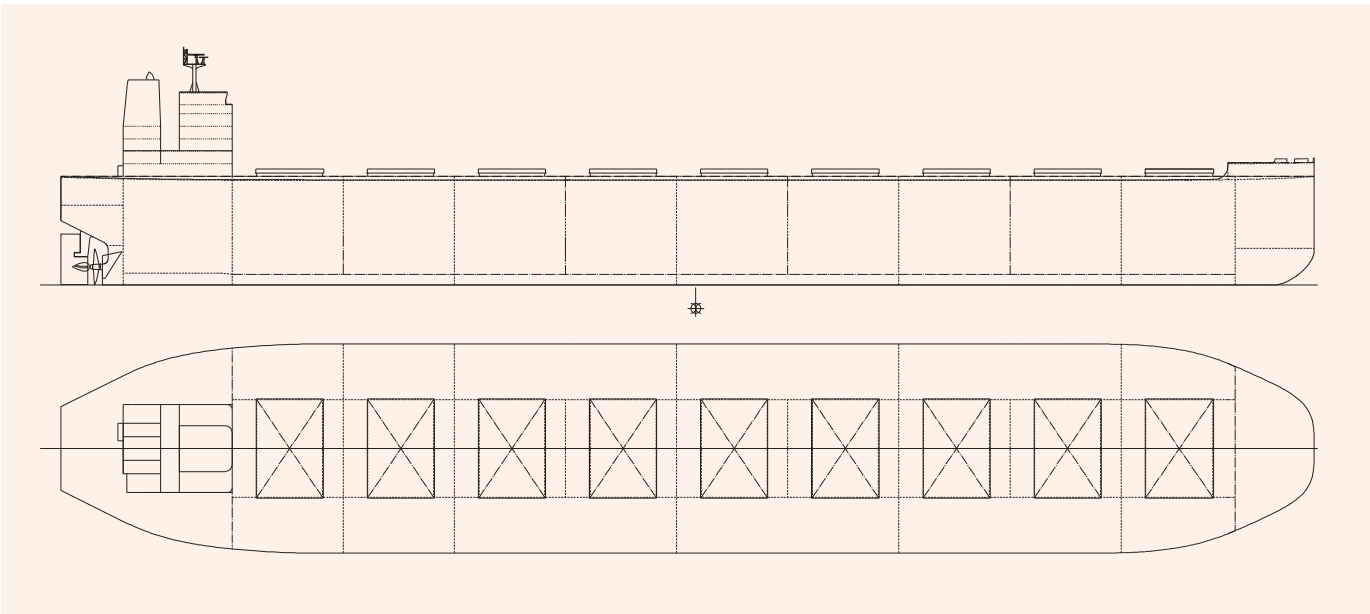
- 1 This is the newly developed Newcastlemax bulk carrier called J211BC, which features both economical and environmental friendly design.
2. The J211BC conforms with MARPOL ANNEX VI NOx Tier III and SOx emission regulations as well as CSR BC&OT (Common Structural Rules for Bulk Carriers and Oil Tankers). These regulations/rules require shipbuilders to achieve more environmental friendly and secure hull structure designs. On the other hand, these requirements have negative impacts in economical design such as decreases in cargo hold capacity and deadweight, and increase in fuel oil consumption. However, JMU has overcome these negative impacts in design based on the latest JMU technology, and achieved more cargo capacity, deadweight, and lower fuel consumption, compared with the previous Newcastlemax bulk carrier series called G209BC, and the J211BC is so improved as to be categorized as Phase 2 of EEDI.
3. The J211BC has larger deadweight and cargo hold capacity suitable for bulk coal and iron ore in the nine cargo holds, achieved by JMU’s expertise and vast experience.
4. The SSD® (Super Stream Duct®) and SURF-BULB® (Rudder Fin with Bulb) equipped fore and aft of the propeller, respectively, greatly improve the propulsion performance. The ALV-Fin® (Advanced Low Viscous Resistance Fin) equipped fore of the propeller controls stern water

flow to gain better propulsive efficiency. Furthermore, a unique bow shape, LEADGE-Bow®, can reduce the added resistance due to waves, and the well-refined shape of the superstructure can attain low wind resistance. This vessel is also equipped with a SOx scrubber to comply with MARPOL ANNEX VI Regulation 14.

5. In addition, corrosion resistant steel (JFE-SIP®-CC) developed by JFE Steel Corporation was adopted for parts of the outer shell, cargo hold frame and inner bottom shell.
6. The DREAM CLOVER has obtained the DSS (HM (F+LS, O)) notation for hull monitoring and DSS (EE) notation for energy efficiency analysis function.

PRINCIPAL PARTICULARS

Length (o.a.)	299.99 m	Deadweight.....	212,078 t
Breadth (mld.).....	50.00 m	Main engine	MAN-B&W 7S65ME-C8.5-HPSCR
Depth (mld.).....	25.00 m	Speed (service)	14.50knots
Draft (mld.).....	18.40 m	Complement	25
Gross tonnage.....	108,903	Classification	NK
		Builder	Japan Marine United Corporation



KAURI 181,000 DWT Bulk Carrier 40

☐ Contents ☐ By Builder ☒ By Ship Type



KAURI 181,000 DWT Bulk Carrier 40

Japan Marine United Corporation (JMU) delivered KAURI, the 181,000 DWT Bulk Carrier at the Ariake Shipyard on September 22, 2021.

Features

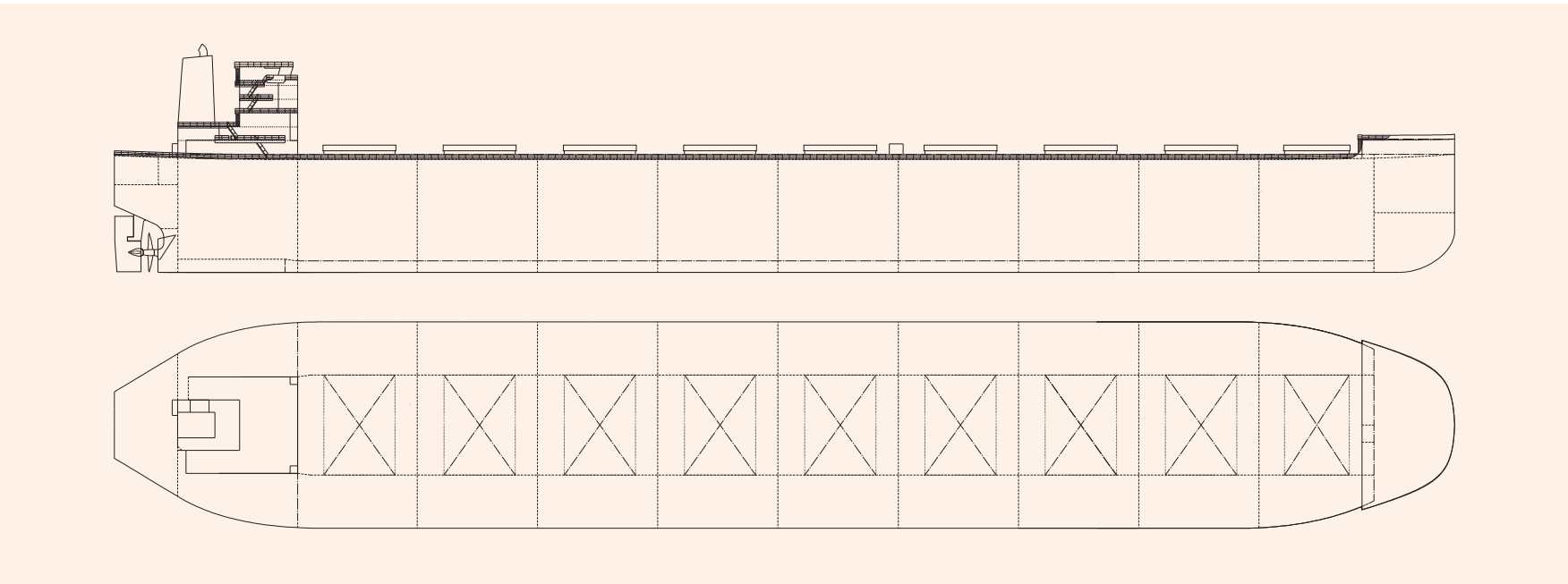
- 1. This is the 2nd vessel of newly developed Dunkirkmax bulk carrier of G-Series, called G181BC, which is successful in both economical and environmental friendly design. .
- 2. This G181BC conforms with MARPOL ANNEX VI NOx Tier III regulations as well as CSR BC&OT (Common Structural Rules for Bulk Carriers and Oil Tankers).
- 3. The Vessel has larger deadweight and cargo hold capacity suitable for bulk coal and iron ore in its nine cargo holds, achieved by JMU's expertise and vast experience.

- 4. SSD® (Super Stream Duct®) and SURF-BULB® (Rudder Fin with Bulb) equipped fore and aft of the propeller, respectively, greatly improve the propulsion performance. ALV-Fin® (Advanced Low Viscous Resistance Fin) equipped fore of its propeller controls stern flow to gain better propulsive efficiency.
- 5. Furthermore, a unique bow shape, LEADGE-Bow®, can

reduce the added resistance due to waves, and the well-refined shape of the superstructure can attain low wind resistance. This vessel is also equipped with a SOx scrubber to comply with MARPOL ANNEX VI Regulation 14.

PRINCIPAL PARTICULARS

Length (o.a.)	292.00 m	Deadweight	182,327 t
Breadth (mld.)	45.00 m	Main engine	MAN-B&W 7S65ME-C8.5-HPSCR
Depth (mld.)	24.55 m	Speed (service)	15.05 knots
Draft (mld.)	18.20 m	Complement	25
Gross tonnage	93,298	Classification	NK
		Builder	Japan Marine United Corporation



NIGHTSKY 183,017 DWT Bulk Carrier 41



PRINCIPAL PARTICULARS

Length (o.a.)	291.99 m	Gross tonnage	93,458	Complement	25
Breadth (mld.)	45.00 m	Deadweight	183,017 t	Classification	Nippon Kaiji Kyokai (NK)
Draft (mld.)	18.20 m	Main engine	MAN B&W 6G70ME-C9.5	Builder	Namura Shipbuilding Co., Ltd.

SANTA ISABEL 208,072 DWT Bulk Carrier

42

☐ Contents ☐ By Builder ☒ By Ship Type



PRINCIPAL PARTICULARS

Length (o.a.)	299.97 m	Gross tonnage	109,872	Complement	27
Breadth (mld.)	50.00 m	Deadweight	208,072 t	Classification	Nippon Kaiji Kyokai (NK)
Draft (mld.)	18.30 m	Main engine	MAN B&W 6G70ME-C9.5	Builder	Namura Shipbuilding Co., Ltd.

OCEAN DRAGON 182,917 DWT Bulk Carrier 43

☐ Contents ☐ By Builder ☐ By Ship Type



PRINCIPAL PARTICULARS

Length (o.a.)	291.96 m	Gross tonnage	93,458	Complement	25
Breadth (mld.)	45.00 m	Deadweight	182,917 t	Classification	Nippon Kaiji Kyokai (NK)
Draft (mld.)	18.20 m	Main engine	MAN B&W 6G70ME-C9.5	Builder	Namura Shipbuilding Co., Ltd.

METIS HORIZON 207,839 DWT Bulk Carrier 44



PRINCIPAL PARTICULARS

Length (o.a.)	299.99 m	Gross tonnage	108,901	Complement	25
Breadth (mld.)	50.00 m	Deadweight	207,839 t	Classification	Nippon Kaiji Kyokai (NK)
Draft (mld.)	18.30 m	Main engine	MAN B&W 6G70ME-C9.5	Builder	Namura Shipbuilding Co., Ltd.